

Kamaile P-3 Focus Group

Nov. 12, 2009 meeting minutes

Introductions:

Jasmine Paris- INPEACE, Community Resource Coordinator/P-3 Focus Group Co-Facilitator

LaurieAnn Dunn- INPEACE, P-3 ECE Liaison/Focus Group Facilitator

Diane Arakaki- Kamaile Academy PCS, K-teacher & GLC (grade level chair)

Suzie Uyeda- Head Start

Dd Chang- Kamaile Academy PCS (1 Preschool class that services 3-5yr. olds), SPED PreK Teacher

Kanoe Renaud- INPEACE, P-3 Program Director

Susan Ware-Kamaile Academy PCS, K-Teacher

Cheryl Jones- Head Start

Lorriane Bennett- Wai'anae Early Ed & Nā Keiki Preschool

Program Announcements:

1. Kamaile's Parent Night Event called Kamaile's Harvest Festival, held on Thursday 10/29/09 was a success. There were about 50 Kindergarten families who enjoyed the make-and-take activity centers, games and prizes as well as dinner that was provided at the ending of the evening. Thank you to Kamehameha Preschool for donating crayons and INPEACE staff for participating at the Harvest Festival with coloring books for prizes and a make-and-take activity packet. Kamaile will be looking forward in planning a Spring Festival in March with support from our focus group members. Kamaile is currently planning a Christmas Festival that will be held on Dec. 18th. If anyone is interested in helping more information regarding the planning of this event will be given at our next meeting, per Diane.
2. Suzie mentioned to the group that funding for WEED is available now. She also mentioned that the Open Doors and Child Care Connection recently cut their funding to only providing funds to qualified families with children age 4. Ongoing recruitment is continuous for Head Start.

Review of meeting held on Oct. 15th-

Assessment & Screening Exchange-

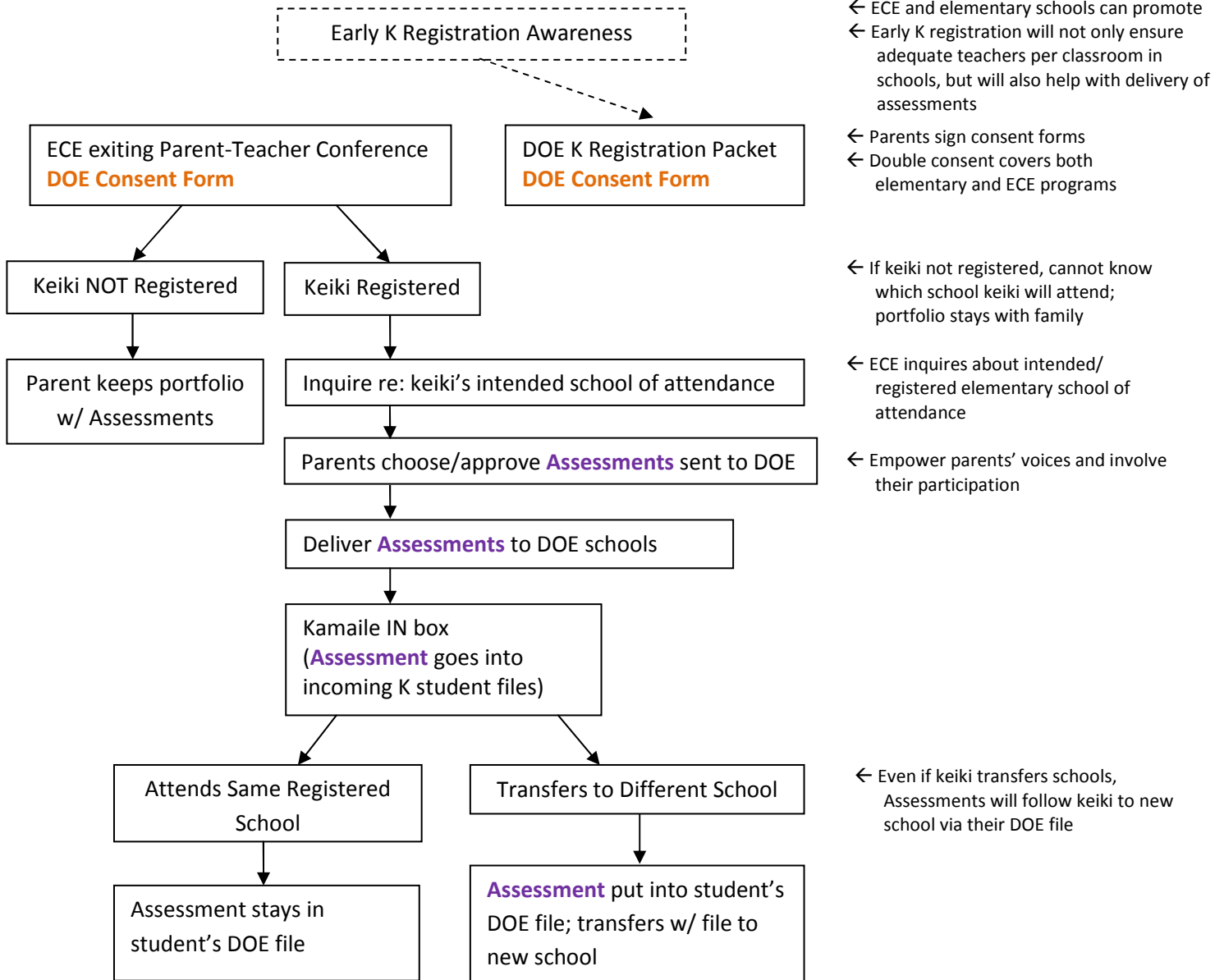
We had a very thorough and complex discussion about the purpose of the Consent Forms and protocol in question. A suggestion was made to change the word "Portfolio" to "Assessment & Screening" instead; no decision was made. Programs that have approved of Consent Form are listed below:

- a. Keiki Steps
- b. Keiki o Ka 'Āina
- c. Kamehameha Preschool
- d. Head Start
- e. Wai'anae Early Ed & Nā Keiki Preschool
- f. Kamaile Academy PCS

Programs	Ready to begin in Spring 2010?	Agrees to Protocol	Can ECE deliver Assessments & Screening File? If so, when?	Is ECE willing to implement consent form for parents to sign during Parent-Teacher Conf.?	Is ECE willing to inform and encourage Parents to register for K early before Parent-Teacher Conf.?
'Alu Like					
Keiki o Ka 'Āina		Y			
Head Start	Y	Y	Yes, anytime during the summer	Y	Y
Kamehameha Preschool	Y	Y	Yes, in June		
Keiki Steps	Y	Y			
Wai'anae EarlyEd & Nā Keiki Preschool		Y			
Ark of Safety					
Seagulls					
Learning Disabilities Assoc. of HI					
PCDC					
Partners in Development					
Kamaile Academy	Y	Y			

Protocol Timeline and Options:

Many different scenarios were taken into consideration (e.g. child registers for a school and then transfers last minute). Keeping these concerns in mind, the group suggested...



IMPORTANT NOTE: No final decisions were made. This is still a very important conversation that is very detailed and needs a lot of participation from the group on both ECE and ELE ends and is still a work in progress. Eventually when a decision has been made among the group and a draft of that is drawn up, participants from the group will be asked to take it to their directors, supervisors and/or PCS board members for approval.

Other Action Items-

1. Jaz and LaurieAnn to follow up with absent programs to ensure their program directors are aware of the movement of the "Assessment & Screening" exchange and invite them to the next meeting for feedback or approval of forms in question by phone.
2. We will start the topic of School Site Visits, parent workshops and the 'Ohana Resource Kit if time permits.

Verify next meeting: Dec. 10, 2009
3:30pm-5:00pm at
Kamaile Academy PCS Room F103